

WIN | PEOPLE | TRANSFORM

# SPECIAL OPERATIONS FORCES ACQUISITION, TECHNOLOGY, & LOGISTICS

TRUSTED EXPERTS

## DEEP DIVE DIR ENTERPRISE INFORMATION SYSTEMS (EIS)

**MS. LILIANA ROMAN**

DIRECTOR EIS



# ENTERPRISE INFORMATION SYSTEMS (EIS)

## VISION

**One Force, One Environment**  
End to end seamless global connectivity for data driven decisions across controlled unclassified, classified secret, top secret, and special access networks.



## MISSION

EIS delivers enterprise-level IT capabilities that enable end-to-end collaboration, messaging, and content management across the SOF Information Enterprise.

## FUNDING

	<u>FY26</u>	<u>FY27</u>
•RDT&E:	\$1.7M	\$1.8M
•PROC:	\$137M	\$336M
•O&M:	\$785M	\$825M

# DIRECTORATE FOR ENTERPRISE INFORMATION SYSTEMS (EIS)

## ENTERPRISE SYSTEMS

Special Operations Command Research, Analysis, and Threat Evaluation System (SOCRATES)



C4 Information & Automated Systems (C4IAS)



Media Production Center MPC & PYSOP-P



## TRANSPORT

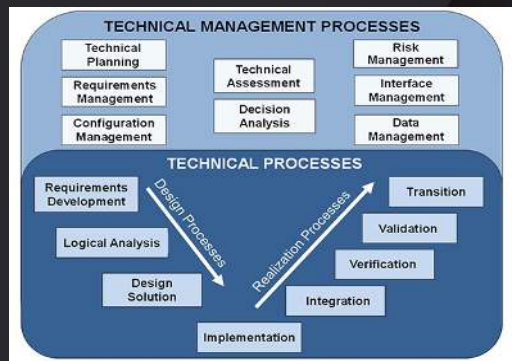
Command & Control ISR Transport (C2ISR-T)



SCAMPI



## SOF INTEGRATION FACILITY



- Analysis of Alternatives
- Solution Development
- Engineering
- Integration
- Cyber Hardening
- Commercial Cloud Management
- Tier 4 IT Support

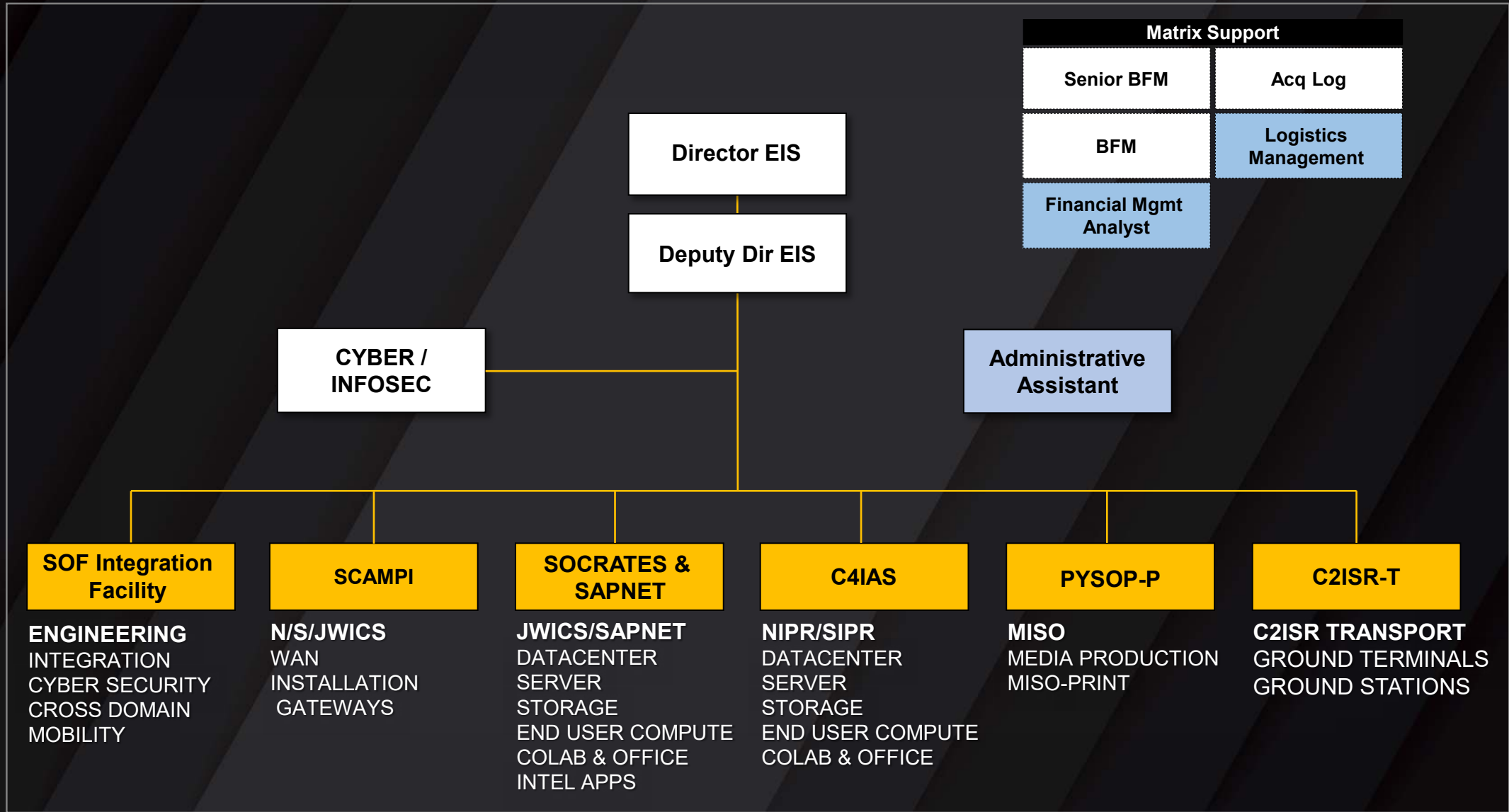
## MODERNIZATION

FOCUS AREAS



- SOF Enterprise Mission Environment
- Data Management
- Cyber Tool Automation
- Cyber Hardening (Zero Trust)
- Post Quantum Cryptography
- SIPRNet O365
- Asset Management

# ENTERPRISE INFORMATION SYSTEMS



# WIN | PEOPLE | TRANSFORM

## PRIORITIES

- **Modernize**

- Reduce Tech Debt
- Divestments
- Consolidation
- Support for High Throughput SATCOM (HTS)

- **Transform**

- Hybrid Cloud (SIPRNET)
- Combined Joint All Domain C2 (CJADC2)
- Secure, centrally managed tactical mission network
- Software Defined Wide Area Network (SDWAN)

- **Secure**

- Zero Trust (ZT)
- Post Quantum Crypto Modernization

# COMMAND, CONTROL, COMMUNICATION, COMPUTERS, AUTOMATION AND INFORMATION (C4IAS)

- Provides SOCOM unclassified and classified garrison infrastructure and end user devices
- Capabilities Include: enterprise level services, local area network devices, management appliances, classified mobility access, disaster recovery, cyber security systems, computers & peripherals, multi-function printing devices, office automation tools, & business collaboration tools



## ACQUISITION STRATEGY

- Commercial Off-the-shelf (COTS) Hardware & Software
- Future capabilities: Technology Insertions

## PERIOD OF PERFORMANCE

- These systems are supported by multiple contracts (~120)

## MILESTONES

- End User Device Life Cycle Replacement
- Infrastructure Block Upgrades
- Technology Enhancements and Modernization
- Zero Trust Compliance

## POINT OF CONTACT

- USSOCOM SOF AT&L, Engage SOF (eSOF) / VULCAN, eSOF@socom.mil

## FUNDING

	<u>FY26</u>	<u>FY27</u>
• O&M	\$233.711M	\$263.406M
• PROC	\$61.914M	\$62.435M

# PRIORITIES / MODERNIZATION EFFORTS

- **Priorities**

- Zero Trust
- Information Technology Service Management (ITSM)
- Container Management Architecture

- **Modernization Efforts**

- Commercial Solutions for Classified (CSfC)
  - Mobile Access Capability (Post-Quantum security)
  - Data-At-Rest Requirements (DDPE sunset)
- Cross Domain System (CDS)
- Security Information & Event Management (SIEM)
- Security Orchestration, Automation & Response (SOAR)
- User Entity & Behavior Analytics (UEBA)
- Backup and Disaster Recovery (DR)
- Containerized applications and virtual appliances

# CHALLENGES / OPPORTUNITIES

- **Challenges**

- Managing technical debt and legacy systems
- Increasing costs for components
- Long lead times
- Subscription licensing & Bundled offerings

- **Opportunities**

- Artificial Intelligence for Operations (AIOps)
- Process Automation

# SOC RESEARCH, ANALYSIS, AND THREAT EVALUATION SYSTEM (SOCRATES)

- Provides the SOCOM Intelligence Automation Enterprise Architecture Ensuring Interoperability with Department of War (DoW), National, and Service Intelligence Information Systems.
- Capabilities Include: Domain Services; Email/Messaging; Database Management; Web Services; Storage Management; Network Management; User Assistance; Disaster Recovery; Unified Communications; Access to National, Theater, & SOF Databases; Imagery/Geospatial Processing, Dissemination, Exploitation, Analysis and Archiving; Targeting; Track Management, and Mapping Distribution.



## ACQUISITION STRATEGY

- Commercial Off The Shelf (COTS) and Non-Developmental Items (NDI)
- Future Capabilities: Technology Enhancements and Modernization

## PERIOD OF PERFORMANCE

- SOCRATES Enterprise is Supported by Multiple Contracts

## MILESTONES

- End User Device Life Cycle Replacement
- Infrastructure Block Upgrades
- Technology Enhancements and Modernization
- Zero Trust Compliance
- Multi-factor Authentication

## POINT OF CONTACT

- USSOCOM SOF AT&L, Engage SOF (eSOF) / VULCAN, eSOF@socom.mil

## FUNDING

	<u>FY26</u>	<u>FY27</u>
• O&M	\$33.2M	\$33.2M
• PROC	\$11.1M	\$11.7M

# PRIORITIES / MODERNIZATION EFFORTS

## • **Priorities**

- Top Secret (TS) Zero Trust Security Model Framework
- Multi-Factor Authentication Implementation
- 802.1X Implementation
- Implementation of Raise-the-Bar Cross-Domain Solution
- Unified Communications Enhancements
- Responsiveness to AOR Mission Changes

## • **Modernization Efforts**

- TS Level Hybrid Cloud Initiatives
- Mapping Distribution
- Backup and Recovery

# CHALLENGES / OPPORTUNITIES

- **Challenges**

- Increasing costs for components
- Supply chain delays

- **Opportunities**

- Data aggregation tools
- Configuration management
- Supply chain risk management support

# PSYCHOLOGICAL OPERATIONS PRINT (PSYOP-P)

- The PSYOP-P System is a family of systems (FoS) designed to support Global Combatant Command (GCC) PSYOP print requirements using commercially available digital presses and auxiliary equipment for the creation, editing, and production of PSYOP print products. The FoS supports small units to an entire theater of operations. The PSYOP FoS consists of three variants:
  - Tactical PSYOP-Light
  - Deployable PSYOP-Medium
  - Strategic PSYOP-Fixed (Heavy Divested FY25)



## ACQUISITION STRATEGY

- COTS/Commodity Purchase Program

## PERIOD OF PERFORMANCE

- Annually: 18 Feb through 17 Feb

## MILESTONES

- Sustainment & Capital Equipment Replacement Program (CERP)

## POINT OF CONTACT

- USSOCOM SOF AT&L, Engage SOF (eSOF) / VULCAN, eSOF@socom.mil

## FUNDING

- |       |             |             |
|-------|-------------|-------------|
|       | <u>FY26</u> | <u>FY27</u> |
| • O&M | \$1.145M    | \$1.196M    |

# PRIORITIES / MODERNIZATION EFFORTS

- **Priorities**

- Sustainment
- CERP of End of Sale (EoS)/End of Life (EoL) equipment

- **Modernization Efforts**

- PSYOP-P-M Environmental Control Unit's (ECU's)

# CHALLENGES / OPPORTUNITIES

- **Challenges**

- Increasing costs for components
- Long lead times for equipment delivery

- **Opportunities**

- PSYOP-P-M ECU repair or replacement

# MEDIA PRODUCTION CENTER (MPC)

- **Media Production Center (MPC) Family of Systems (FoS):**
  - MPC-Heavy: Fixed Psychological Operations (PSYOP) system housed in the Media Operation Center (MOC) aboard Fort Bragg, NC.
  - MPC- Medium/Light: Globally deployable systems which include multi-media production, editing, and archiving capabilities to deliver imagery, audio, animation, and audio/video products of varying technical complexity to support SOF PSYOP Operators.



High-End  
Laptop



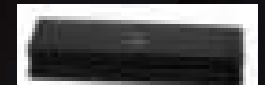
Camcorder  
(MPC-M)



MPC-H Control Room



SLR Camera  
(MPC-L/M)



Scanner  
(MPC-L/M)

## ACQUISITION STRATEGY

- Hardware: COTS/Commodity Purchase Program
- Software Applications: Software Acquisition Pathways

## PERIOD OF PERFORMANCE

- Annually: 18 Feb through 17 Feb, also supported by other contracts

## MILESTONES

- MPC-H: Audio Suite CERP complete
- MPC-H: Edit & Archive Suite CERP
- MPC-Kits: FY26 - Commence Next Gen Development

## POINT OF CONTACT

- USSOCOM SOF AT&L, Engage SOF (eSOF) / VULCAN, eSOF@socom.mil

## FUNDING

	<u>FY26</u>	<u>FY27</u>
• O&M	\$5.228M	\$5.490M
• RDT&E	\$1.777M	\$1.813M

# PRIORITIES / MODERNIZATION EFFORTS

- **Priorities**

- Sustainment
- CERP of EoS/EoL equipment

- **Modernization Efforts**

- MPC-H Edit & Archive Suites
- MPC-Kits Next Generation (NextGen) upon finalization of Capabilities Document (CDD) update

# CHALLENGES / OPPORTUNITIES

- **Challenges**

- Increasing costs for components
- Supply Chain Delays

- **Opportunities**

- MPC-Kits NextGen
- Graphics/Animation and integration of AI, Media Support Detachment (MSD) Room updates dependent on available lifecycle replacement funding

# WIN | PEOPLE | TRANSFORM

## SCAMPI

- SCAMPI (not an acronym) is SOCOM's telecommunications system enabling network transport of voice, data, and video services (all classifications).
- SCAMPI provides Enterprise level Unified Capabilities (UC), routers, switches, encryption, acceleration, and transport devices.



### ACQUISITION STRATEGY

- Commercial Off-the-Shelf/ Non-Developmental Item
- Future capabilities: Evolutionary Technology Insertions

### PERIOD OF PERFORMANCE

- These systems are supported by multiple contracts

### MILESTONES

- Capital Equipment Replacement Program
- Evolutionary Technology Insertions

### POINT OF CONTACT

- USSOCOM SOF AT&L, Engage SOF (eSOF) / VULCAN, eSOF@socom.mil

### FUNDING

	FY26	FY27
• O&M	\$8.9M	\$11.7M
• PROC	\$21.4M	\$21.3M

# PRIORITIES / MODERNIZATION EFFORTS

- **Priorities**

- Upgrade gateways to support higher throughput
- Upgrade voice and video architecture
- Zero Trust Network Access (ZTNA)

- **Modernization Efforts**

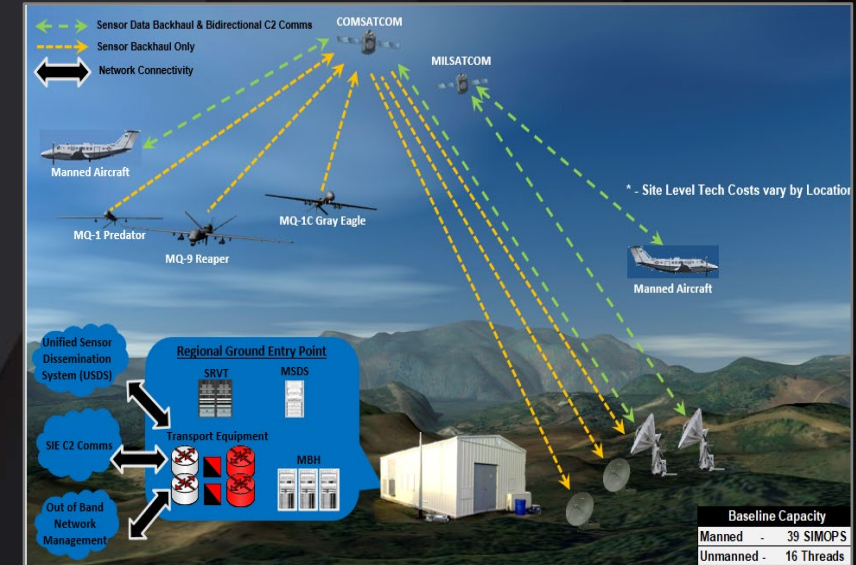
- Encryption / Post-Quantum Cryptography (PQC)
- Commercial Solutions for Classified (CSfC)
- Software Defined Wide Area Networking (SD-WAN)
- Support interoperability with cloud environment

# CHALLENGES / OPPORTUNITIES

- **Challenges**
  - Increasing costs for components
- **Opportunities**
  - Virtualization Technology

# COMMAND & CONTROL, INTELLIGENCE, SURVEILLANCE, & RECONNAISSANCE-TRANSPORT (C2ISR-T)

- Ingests, disseminates, and distributes ISR data/Full Motion Video (FMV) and delivers C2 services to crewed platforms
- SOF-unique data transport system with agile, resilient, reliable information sharing to command and control and global distribution operations in real or near-real time



## ACQUISITION STRATEGY

- Commercial Off-the-Shelf/Non-Developmental Item
- Future capabilities: Evolutionary Technology Insertions

## PERIOD OF PERFORMANCE

- These systems are supported by multiple contracts

## POINT OF CONTACT

- USSOCOM SOF AT&L, Engage SOF (eSOF) / VULCAN, eSOF@socom.mil

## FUNDING

	FY26	FY27
• O&M	\$17.1M	\$15.4M
• PROC	\$21.6M	\$22.0M

## MILESTONES

- Capital Equipment Replacement Program
- Evolutionary Technology Insertions

# PRIORITIES / MODERNIZATION EFFORTS

- **Priorities**

- Increase access gateways to support higher throughput
- Resilient mobile data/comms in contested environments
- Support interoperability with cloud environment
- Satellite Communication (SATCOM) Resiliency
  - Hybrid multi-constellation/multi-band access
  - Commercial gateway infrastructure integration

- **Modernization Efforts**

- Transmission Security/Flexible Software Waveform Modems

# CHALLENGES / OPPORTUNITIES

- **Challenges**

- Solutions that work with our infrastructure
- Increasing costs for components
- Supply Chain Delays
- Combined Joint All Domain C2 (CJADC2)

- **Opportunities**

- Virtualization Technology

# SOF INTEGRATION FACILITY

- **Special Operation Forces (SOF) Integration Facility (SIF)/ Site Integration Team (SIT):**
  - The SOF Integration Facility (SIF)/Site Integration Team (SIT) mission is to provide a comprehensive IT hardware and software integration and test environment; thereby enabling an objective, technical and functional assessment of SIE requirements. In addition to providing Tier-4 support across the SIE, the SIT also provides support to J6 Operations with project planning, and the installation/coordination of new feature set releases of current capabilities as required.



## POINT OF CONTACT

- Chief of Innovation  
dl-socom\_sif\_leads@socom.mil

## INTERGRATION AND SUPPORT

- New Capabilities
- New Feature Sets
- Incident Response (Tier-4)

## SUPPORT STRATEGY

- Combining hardware and software within a "sandboxed" setting, separated from the live operational network

## FUNCTIONS

- Plan, design, install, engineer, test, validate, integrate, package, and document new capabilities for the SIE

## BUSINESS W/THE SIF

- CRQ/IMT-26
- Required Roles
  - Sponsor
  - Service/Mission Owner

## ORGANIZATION

- Data Team
- Networks Team
- Sec/ICAM Team
- Dev Ops Team
- PM Team
- Dev Lab Team

# PRIORITIES

## • **Priorities**

- Enterprise Integration and Adoption
- Modernize/Innovate at the speed of industry
  - Timeline of DoW vs SOF leveraging new technology
- SOCOM processes
  - ATO process at the lowest level

## • **Modernization Efforts**

- DEVSECOPS process
  - Dev Lab/Pre-Prod Environment/Production (Overlaying Security)
- Tactical Edge/TMNs
  - Integration of Sensors and Mission Partners (US and Foreign)
- Artificial Intelligence (AI)
  - Data processing and near real time risk analysis

WIN | PEOPLE | TRANSFORM

# QUESTIONS



WIN | PEOPLE | TRANSFORM

# DOING BUSINESS WITH SOCOM

## Office of Small Business Programs (Will engage with companies of any size!)

First stop for questions, concerns, or assistance

POCs: Ashley Farrier and Paul Ward

Ashley.Farrier@socom.mil

Paul.Ward@socom.mil

osbp@socom.mil

813.826.9475

## Engage SOF (eSOF) on Vulcan

Pathway to present SOF relevant capabilities to USSOCOM

POC: Kimberly Carberry

Kimberly.r.Carberry.civ@socom.mil

eSOF@socom.mil

<https://www.engageSOF.com>

<https://www.Vulcan-SOF.com>

## SOFWERX

Unclass, open forum partnering with industry to solve Warfighter problems

<https://www.sofwerx.org>

## TECHNICAL EXPERIMENTATION

<https://www.socom.mil/SOF-ATL/Pages/technical-experimentation.aspx>

